



Roseberry Place, London, E8

BUTLER & STAG



**Price Guide £575,000 -  
£600,000**

**A stunning two-bedroom  
apartment situated on the  
second floor of the  
prestigious Dalston  
Square development in  
Hackney, E8.**



## Leasehold

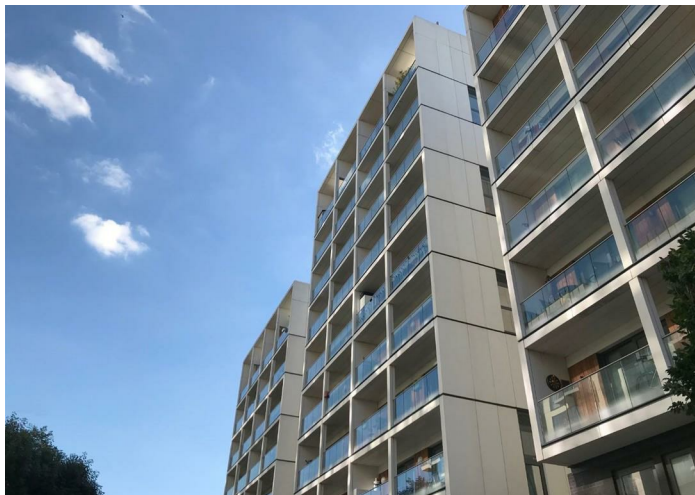
- Second Floor Apartment
- Resident Only Gym
- Private Balcony
- EWS1 Compliant
- 24 Hour Concierge
- Two Bedrooms
- Close to Dalston Junction and Dalston Kingsland Overground Stations.
- Dalston Square

This well situated, modern property features two double bedrooms, a spacious reception/dining room with fully integrated open-plan kitchen and floor to ceiling windows leading out onto a large west-facing private balcony.

Residents of Dalston Square benefit from use of the 24-hour concierge service and on-site, generously equipped residents' gymnasium.

Dalston Square is perfectly located with easy access to the restaurants, bars and other amenities that Dalston and the surrounding areas of Islington, Angel, Hoxton and Shoreditch has to offer. Excellent transport links with high frequency services to The City (10 mins), Canary Wharf (20 mins) and the West End (30 mins to Oxford Circus).

**\*LEASEHOLD  
LEASE LENGTH - 125 YEARS  
\*SERVICE CHARGE - £2,400 PA  
\*GROUND RENT - £730 PA  
\*COUNCIL TAX - BAND D**





IMPORTANT NOTICE - These particulars have been prepared in good faith and they are not intended to constitute part of an offer or contract. We have not performed a structural survey on this property and the services, appliances and specific fittings have not been tested. All photographs, measurements, floor plans and distances referred to are given as a guide and should not be relied upon.

A large, dark blue silhouette of a stag's head with prominent antlers, positioned on the right side of the page.

**BUTLER & STAG**

☎ 020 8102 1236

🏠 508 Roman Road, Bow, London, E3 5LU

✉ [bow@butlerandstag.com](mailto:bow@butlerandstag.com)

[www.butlerandstag.uk](http://www.butlerandstag.uk)